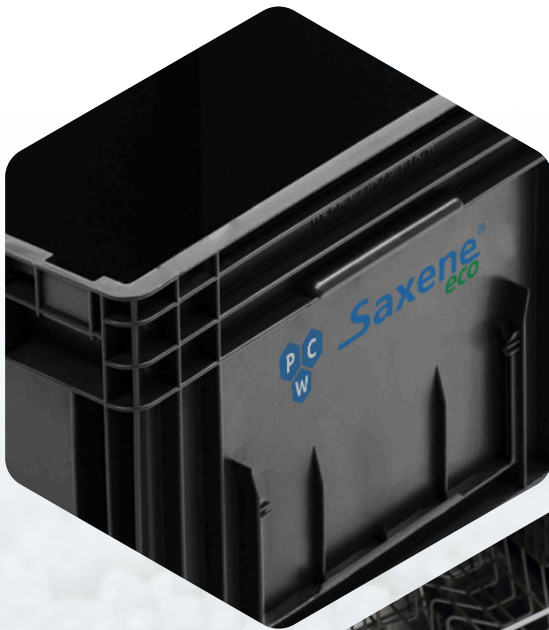




Compound
Customized to your needs.

Saxene[®] Saxene[®]_{eco} polypropylene compounds



Saxene[®] Saxene[®]_{eco} polypropylene compounds

Extrusion and injection moulding



Saxene® polypropylene compounds

PCW GmbH manufactures PP compounds based on homopolymers and copolymers in various densities and colours. To improve rigidity, higher mechanical strength and heat distortion or dimensional stability, talcum or glass fibre is used as a reinforcement. To achieve specific optical and technical properties, we use specially selected fillers. All products are available in customer specified colour settings.

Type	Saxene	Polymer	MFR (230/2.16) [g/10 min]	Density [g/cm ³]	E-Modulus [MPa]	Charpy [kJ/m ²]	Remark / Application	
TC talc reinforced	PP 1101 TC 40	PP homo	2	1,23	4500	6	Shutter profiles	
	PP 1660 TC 10		12	0,98	1900	4	Electrical parts	
	PP 1661 TC 20		12	1,04	2900	2,5	Filter casings	
		PP 2220 TC 20	PP copo	6	1,03	2500	4	Transport crates
		PP 2319 TC 20		12	1,04	2500	5	Storage trays
		PP 3320 TC 10	PP impact	12	0,96	1600	35	Car interior
		PP 3421 TC 16		18	1,02	1500	30	Car interior
		PP 3420 TC 20		19	1,08	1100	30	Car exterior
GF glass fibre reinforced	PP 1310 GF 20	PP homo	7	1,02	4400	8,5	Technical parts	
	PP 1310 GF 30		10	1,11	6500	10	Electrical parts	
	PP1360 GF 30		18	1,14	8200	8	Household appliances	
	PP 2312 GF 30	PP impact	15	1,12	5500	10	Structural components	
	PP 2312 GF 40		3,5	1,21	8600	13	Household appliances	
EC electrically conductive	2290 EC	PP copo	6	1,02	1150	40	Storage crates, trays	
	2385 EC		10	1,03	1200	18	Storage crates	
	2261 EC		3	1,05	1200	35	Semi-finished products	
	3190 EC		5	1,00	1250	45	KLT box automotive	
FR flame resistant	VP 5010	PP copo	17 (230/5)	1,30	2500	2	UL 94 V-0/1,6 halogenated	
	PP 2311 FR		8	1,03	1500	7	UL 94 V-2/1,6 halogenated	
	PP 2310 GM 20 FR HF		15 (230/5)	1,10	2200	3	UL 94 V-2/1,6 halogenated	

Saxene^{eco} polypropylene compounds

PCW GmbH is your expert for innovative and applicative plastic compounds with worldwide shipping options. With their tailor-made properties, Saxene^{eco} compounds fulfil these new goods standards, considering IATF 16949 and many other automotive standards.

Steering safely into the future of the automotive industry with Saxene^{eco}.

Sustainability and resource conservation are high priorities for us. Legislators are increasingly urging for measures to promote the use of recycled material in sophisticated plastic solutions.

Environmental light-weight designs for e-mobility.

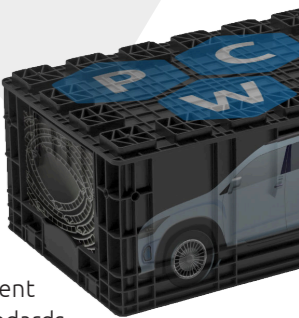
Our near-to-prime properties for sophisticated components and a reduced carbon footprint deliver a favourable eco-balance and support the circular economy; additionally, our low-emission PP compounds are, amongst other things, thermally stable, odourless, and process-safe.

Properties

- Thermally stable
- Low emission
- Odourless
- Flame resistant
- Process-safe
- Reduced carbon footprint
- Positive life cycle assessment
- Near-to-prime properties for sophisticated components
- Wide product range for different use cases
- Cost-effective

Certifications

- IATF 16949 quality management
- ISO 50001 energy management
- ISO 14001 environmental management and other numerous automotive standards



Type	Filler content [%]	MFR (230/2.16) [g/10min]	E-Modulus [MPa]	Charpy [kJ/m ²]	Recycled material content [%]	Application	Properties
Saxene PP 6320 GF 30 BK	30	10	7000	8	35	Plastic frontend carrier	high thermal stability
Saxene PP 6350 GF 20 BK	20	10	4200	16	40	Plastic frontend carrier inlay	impact resistant
Saxene PP 6352 TC BK 113	20	25	2100	3	40	Water reservoir cover	colour stable, impact resistant
Saxene PP 6480 TC 30 BK	30	14	2300	12	35	Front bumper carrier	high stiffness
Saxene PP 6370 GF 20 BK	20	11	4800	11	28	Dashboard, roof rack	VDA 277 emission: < 40 µg/g* VDA 278 fogging: < 500 µg/g*

The content of this publication is non-binding and is intended for information purposes only. The information is not indicative in the sense of applicable legal regulations and does not establish a contractual relationship regarding the products presented. Furthermore, the information does not purport to be fully comprehensive and is not intended to serve as a technical specification. Insofar as not otherwise explicitly agreed, it shall also not be part of existing or future contracts with PCW GmbH.

Contact us - we will be happy to advise you.
+49 (0) 3423 661 0
info@pcw.gmbh



Innovative and Competent

With a passion for technical perfection and a sure feeling for market requirements and developments, PCW GmbH is the specialist for compounds under the umbrella of Advance Holding.

Today, Advance Holding generates a revenue of more than 520 million euros with approximately 800 employees and has significant market experience and large production capacities at all together five locations in Germany and North America.

For more information, please visit our website or feel free to contact us personally.



+49 3423 661 0



info@pcw.gmbh



www.pcw.gmbh

Innovative and Competent – Your right partner for compounding. At its facility in the richly traditional town of Eilenburg, Germany, PCW GmbH focuses on the development and production of tailor-made compounds.

PCW GmbH

Am Alten Celluloidwerk 7
D-04838 Eilenburg

phone: +49 3423 661 0

fax: +49 3423 661 485

www.pcw.gmbh



The content of this publication is provided for information only. PCW GmbH does not assume any liability concerning accuracy, reliability or completeness of the information contained in this publication. There is no guarantee for its completeness and it shall not be used for technical specification purposes. At its own discretion PCW GmbH may revise the information in the present publication at any time without announcement.